



Ms. Makala Jefferies  
York Place  
Elizabeth House  
Queen Street  
Leeds  
LS1 2TW

Our Ref: 2019/2279414  
Your Ref: YP1214616  
21/01/2019

Dear Sir/Madam

**LAND AT ATKINS ROAD CLAPHAM**

Thank you for your letter of 21/01/2019 in which you asked if there are any electric lines and/or electrical plant belonging to UK Power Networks (LPN) plc ("UK Power Networks") within the land identified by your enquiry.

I enclose a copy of UK Power Networks record of its electric lines and/or electrical plant at the site identified by your enquiry. If the records provided do not relate to the land to which you had intended to refer please resubmit your enquiry.

Should your excavation affect any of our Extra High Voltage equipment ( 6.6 KV, 22 KV, 33 KV or 132 KV), please contact us to obtain a copy of the primary route drawings and associated cross sections.

This information is made available to you on the terms set out below.

- 1. UK Power Networks does not warrant that the information provided to you is correct. You rely upon it at your own risk.**
2. UK Power Networks does not exclude or limit its liability if it causes the death of any person or causes personal injury to a person where such death or personal injury is caused by its negligence.
3. **Subject to paragraph 2 UK Power Networks has no liability to you in contract, in tort (including negligence), for breach of statutory duty or otherwise how for any loss, damage, costs, claims, demands, or expenses that you or any third party may suffer or incur as a result of using the information provided whether for physical damage to property or for any economic loss (including without limitation loss of profit, loss of opportunity, loss of savings, loss of goodwill, loss of business, loss of use) or any special or consequential loss or damage whatsoever.**
4. The information about UK Power Networks electrical plant and/or electric lines provided to you belongs to and remains the property of UK Power Networks. You must not alter it in any respect.
5. **The information provided to you about the electrical plant and/or electric lines depicted on the plans may NOT be a complete record of such apparatus belonging to UK Power Networks. The information provided relates to electric lines and/or electrical plant belonging to UK Power Networks that it believes to be present but the plans are NOT definitive: other electric lines and/or electrical plant may be present and that may or may not belong to UK Power Networks.**



6. **Other apparatus not belonging to UK Power Networks is not shown on the plan. It is your responsibility to make your own enquiries elsewhere to discover whether apparatus belonging to others is present. It would be prudent to assume that other apparatus is present.**
7. You are responsible for ensuring that the information made available to you is passed to those acting on your behalf and that all such persons are made aware of the contents of this letter.
8. Because the information provided to you may **NOT** be accurate, you are recommended to ascertain the presence of UK Power Networks electric lines and/or electrical plant by the digging of trial holes. **Trial holes should be dug by hand only.**

Excavations must be carried out in line with the Health and Safety Executive guidance document HSG 47. We will not undertake this work. A copy of HSG 47 can be obtained from the Health and Safety Executives website.

**All electric lines discovered must be considered LIVE and DANGEROUS at all times and must not be cut, resited, suspended, bent or interfered with unless specially authorised by UK Power Networks.**

**The electric line and electrical plant belonging to UK Power Networks remains so even when made dead and abandoned and any such electric line and/or electrical plant exposed shall be reported to UK Power Networks.**

**Where your works are likely to affect our electric lines and/or electrical plant an estimate of the price of any protective /diversionary works can be prepared by UK Power Networks Branch at Metropolitan House, Darkes Lane, Potters Bar, Herts. , EN6 1AG, telephone no. 0845 2340040**

- 9 **Any work near to any overhead electric lines must be carried out by you in accordance with the Health and Safety Executive guidance document GS6 and the Electricity at Work Regulations.**

The GS6 Recommendations may be purchased from HSE Books or downloaded from the Energy Networks Association's website.

If given a reasonable period of prior notice UK Power Networks will attend on site without charge to advise how and where "goal posts" should be erected. If you wish to avail yourself of this service, in the first instance please telephone: 0845 6014516 between 08:30 and 17:00 Monday to Friday, Public and bank holidays excepted.

10. You are responsible for the security of the information provided to you. It must not be given, sold or made available upon payment of a fee to a third party.
11. If in carrying out work on land in, on, under or over which is installed an electric line and/or electrical plant that belongs to UK Power Networks you and/or anyone working on your behalf damages (however slightly) that apparatus you must inform immediately UK Power Networks by telephone at the number below providing:
  - your name, address and telephone number; and
  - the date, time and place at which such damage was caused; and
  - a description of the electric line and/or electrical plant to which damage was caused; and
  - the name of the person whom it appears to you is responsible for that damage; and
  - the nature of the damage

**In the East of England or London 0800 780078 (24 Hours).**

12. The expression "UK Power Networks" includes UK Power Networks (EPN) plc, UK Power Networks (LPN) plc, UK Power Networks (SEPN) plc, UK Power Networks and any of their successors and predecessors in title.



IF YOU DO **NOT** ACCEPT AND/OR **DO NOT** UNDERSTAND THE TERMS OF USE SET OUT IN PARAGRAPHS 1 TO 12 INCLUSIVE ABOVE YOU MUST NOT USE THE PLANS AND RETURN THEM TO ME.

I would remind you that work adjacent to electric lines and/or electrical plant represents a serious risk to health and safety and as such should feature amongst the items you have assessed in your workplace risk assessment and method statement.

I shall be pleased to supply you with further assistance if you require it.

Yours sincerely

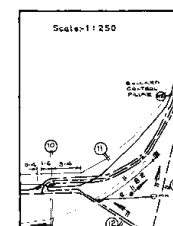
Lucille Valentine – Telephone: 0800 0565 866  
Plan Provision

**UK Power Networks, Plan Provision, Fore Hamlet, Ipswich, IP3 8AA. Tel: 0800 0565866.  
1963782.**

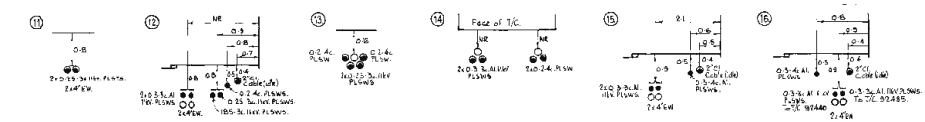
**Fax: 0870**

UK Power Networks Registered in England and Wales Registered No 7290590.  
Registered office: Newington House, 237 Southwark Bridge Road London, SE1 6NP.

















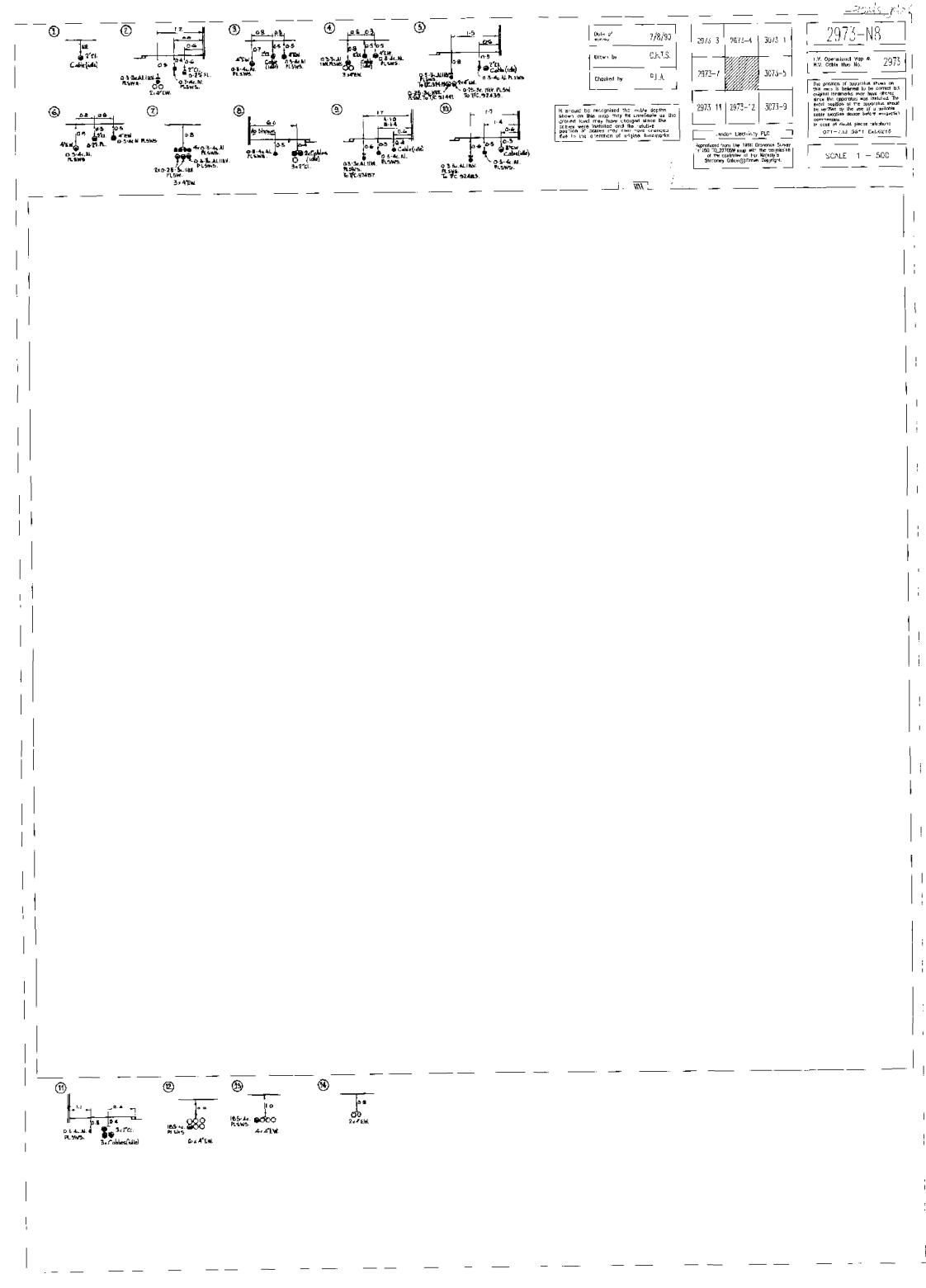












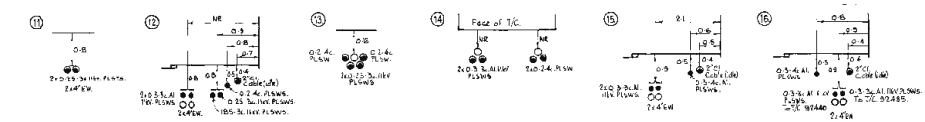




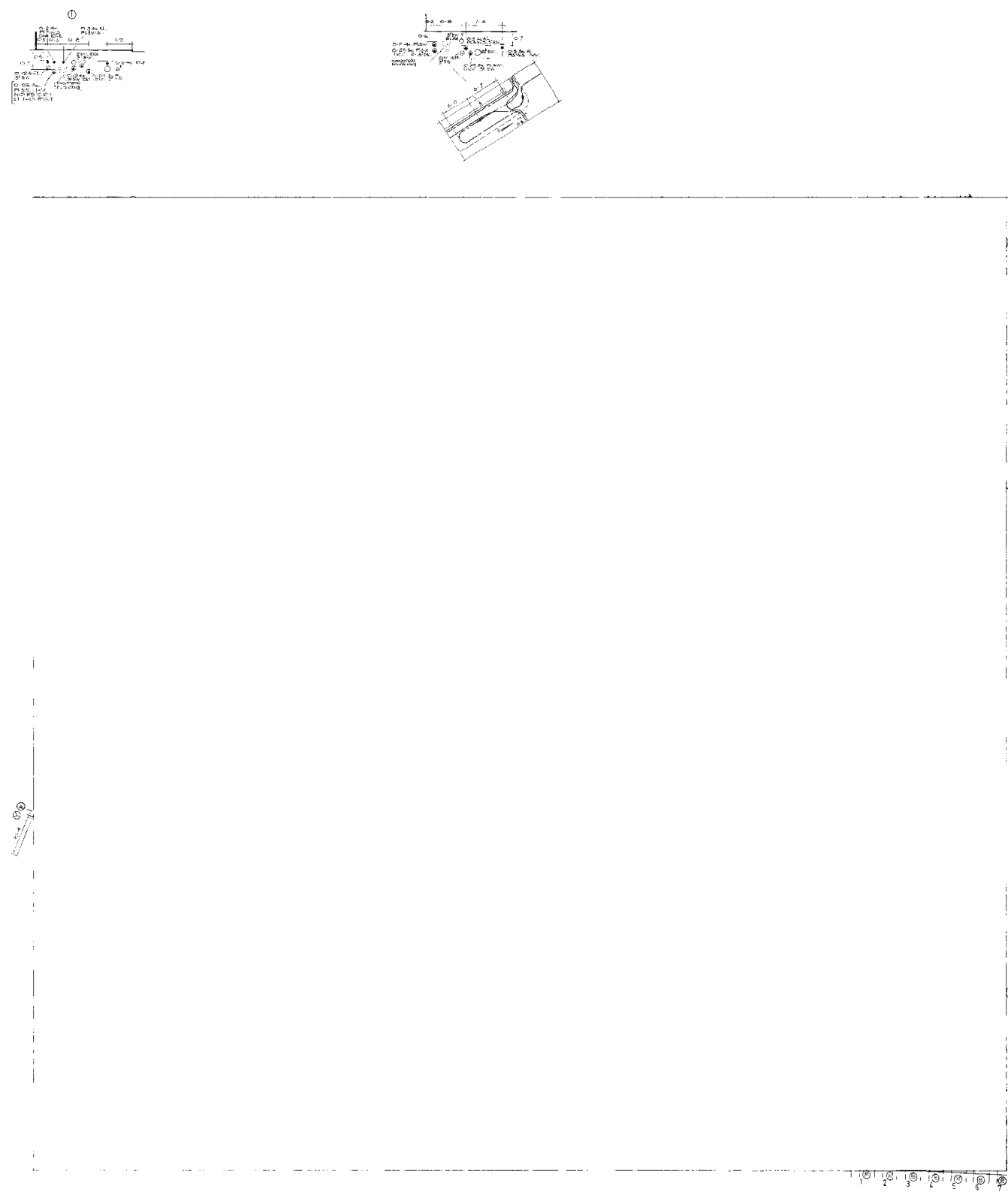




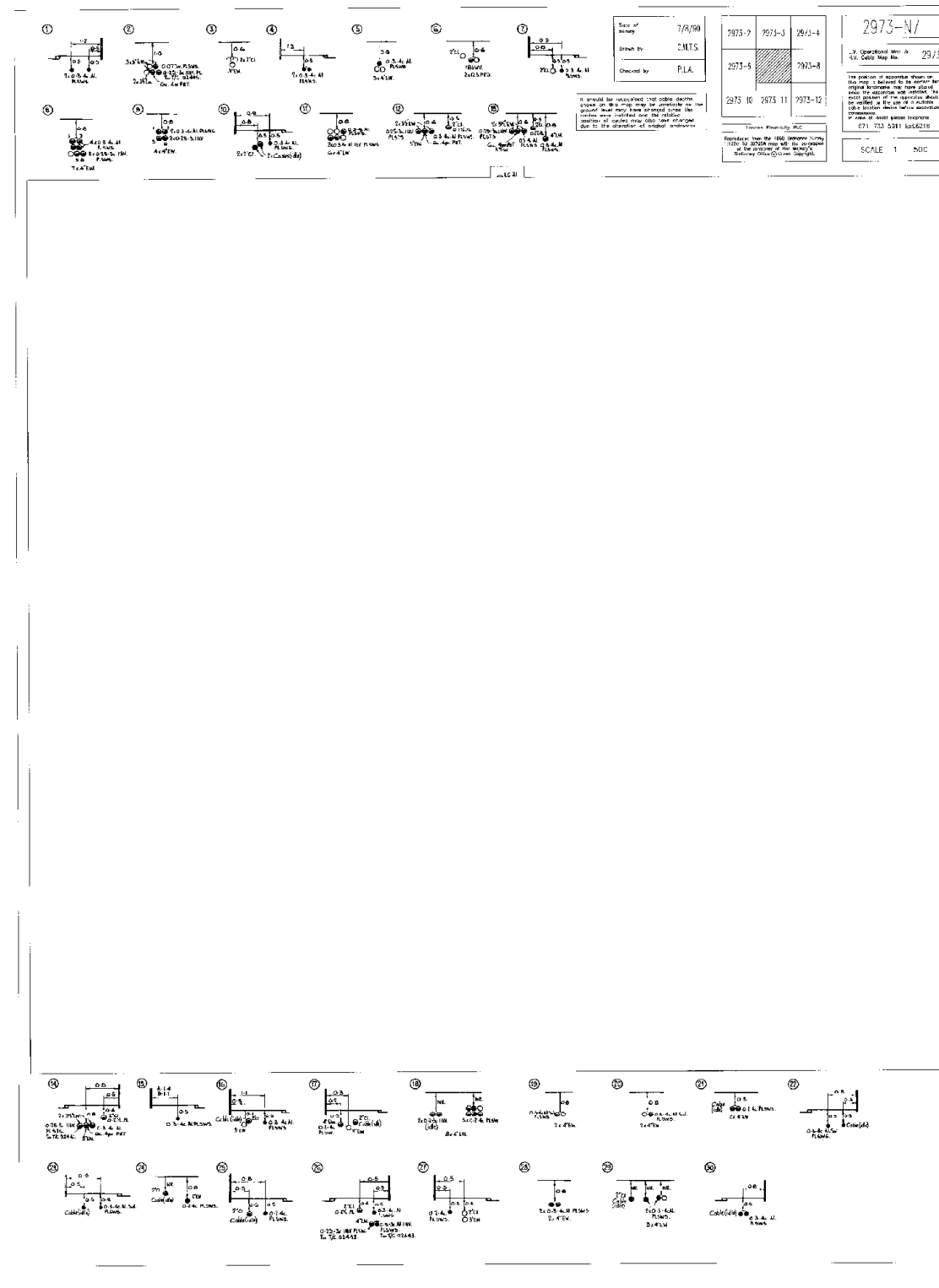






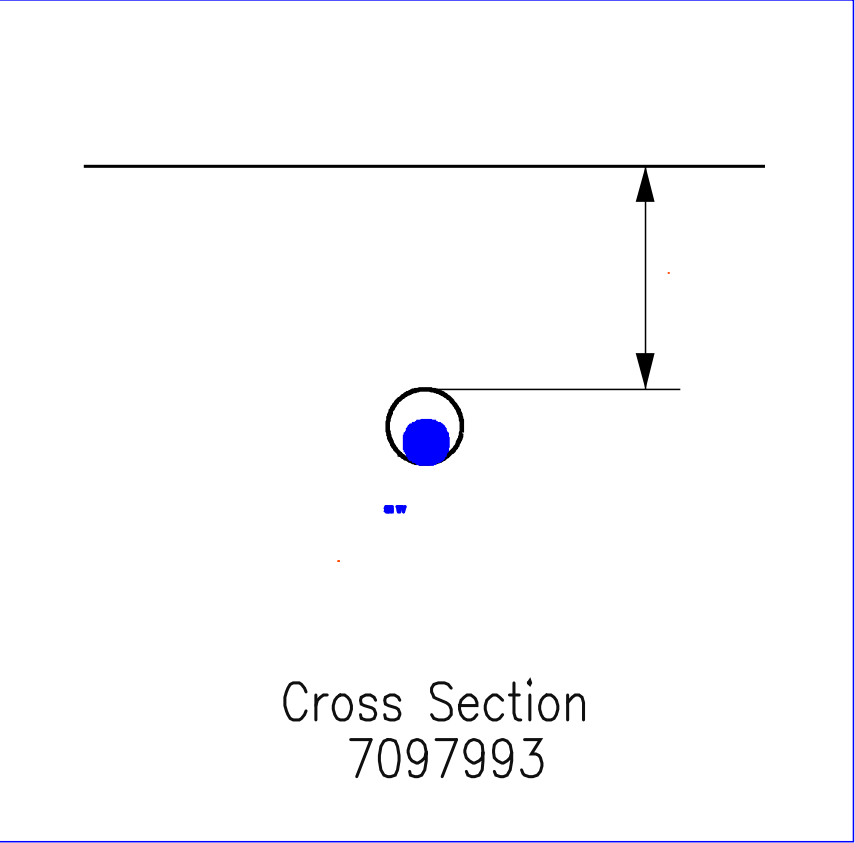




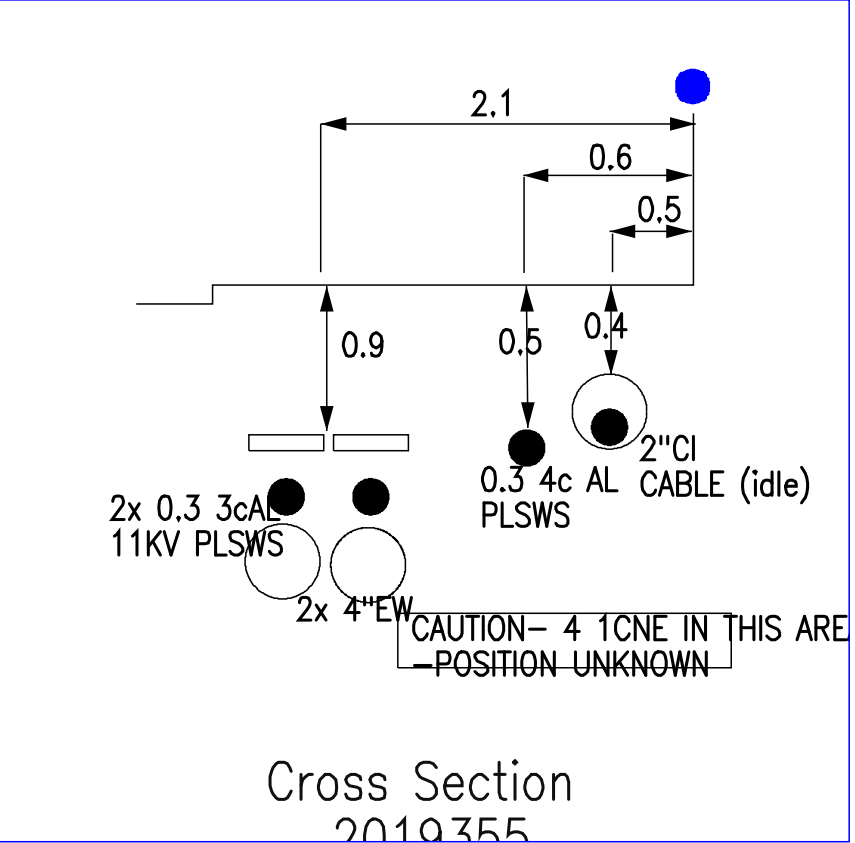




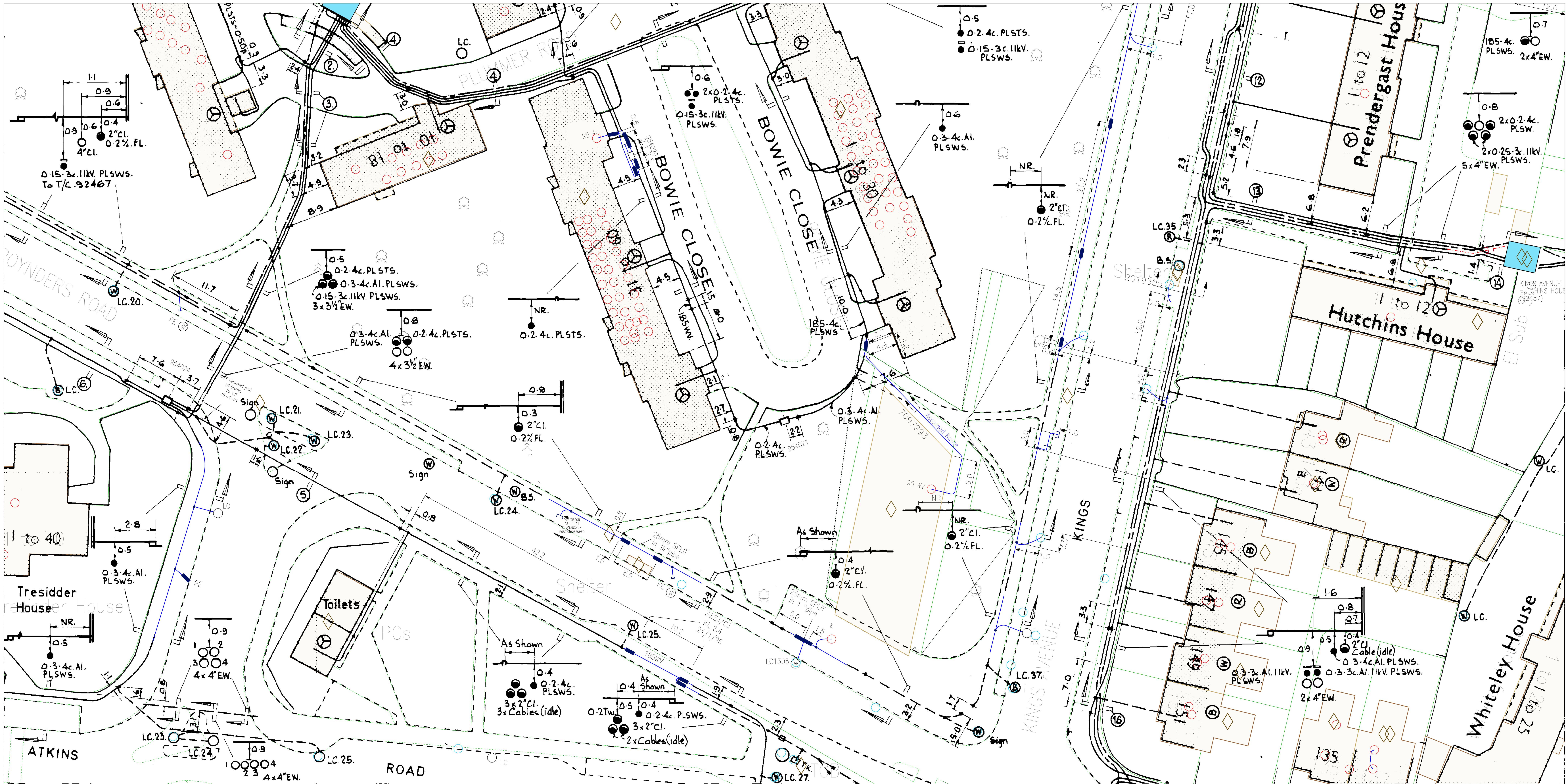
Cross Section (7097993)



Cross Section (2019355)







Plotted On : 21/01/2019

Plotted By : Lucille Valentine

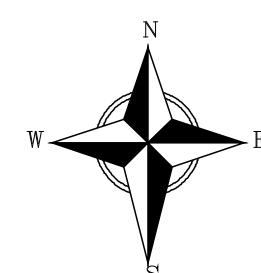
Plot Description: LAND AT ATKINS ROAD CLAPHAM

2019/2279414/comp

Map Centre : TQ2973NE



UK Power Networks  
Plan Provision  
Fore Hamlet  
IPSWICH  
Suffolk  
IP3 8AA  
Tel 0800 0565 866  
Fax 08701 963782



For details of the symbology please refer to  
<http://www.ukpowernetworks.co.uk/safety-emergencies/in-the-workplace/understanding-safety-symbols.html>

#### PRIMARY CABLES EXTRA HIGH VOLTAGE CABLES (EHV) 22,000 TO 132,000 Volts

Depth normally 750mm cover in carriageway & 600mm cover in footway.  
Before digging within one metre of these cable routes  
Telephone 0800 056 5866 in order that the Company's apparatus may be located  
on site and any necessary protection works agreed.

N.B. THRUST BORERS OR MOLES MUST NOT BE USED WITHIN THE VICINITY OF ANY  
CABLES BELONGING TO UK POWER NETWORKS WITHOUT FIRST CONTACTING THIS  
COMPANY.

1. The position of the apparatus shown on this drawing is believed to be correct but the original landmarks may have been altered since the apparatus was installed.
2. The exact position of the apparatus should be verified – use approved cable avoidance tools prior to excavation using suitable hand tools.
3. It is essential that trial holes are carefully made avoiding the use of mechanical tools or picks until the exact location of all cables have been determined.
4. It must be assumed that each property and item of street furniture has an electricity supply. A separate record is kept for each service cable but its route is not necessarily shown on this record.
5. All cables must be treated as being live unless proved otherwise by UK Power Networks.
6. The information provided must be given to all people working near UK Power Networks' plant & equipment. Do not use plans more than 3 months after the issue date for excavation purposes.
7. Please be aware that electric cables/lines belonging to other owners of licensed electricity distribution systems may be present and it is your responsibility to identify their location.

1. UK Power Networks Ltd does not warrant that the information provided to you is correct. You rely upon it at your own risk.
2. UK Power Networks Ltd does not exclude or limit its liability if it causes the death of a person or causes personal injury to a person where such death or personal injury is caused by its negligence.
3. Subject to paragraph 2, UK Power Networks Ltd has no liability to you in contract, in tort (including negligence), for breach of statutory duty or otherwise howsoever for any loss, damage, costs, claims, demands or expenses that you or any third party may suffer or incur as a result of using the information provided whether for physical damage to property or for any economic loss (including without limitation loss of profit, loss of opportunity, loss of savings, loss of goodwill, loss of business, loss of use) or any special or consequential loss or damage whatsoever.

Reproduced by permission of Ordnance Survey on behalf of HMSO. (C) Crown copyright and database right 2019. All rights reserved. Ordnance Survey Licence number 100019826. Data has been added to the Ordnance Survey base map; all proprietary rights in such additional data are and shall remain the exclusive property of (C) London Power Networks plc or Eastern Power Networks plc or South Eastern Power Networks plc each being a distribution licensee under section 6(1)(c) of the Electricity Act 1989 for the relevant distribution services area as that term is defined in such licensee's distribution licence. All rights in such data reserved.

#### ADVICE TO CONTRACTORS ON AVOIDING DANGER FROM BURIED ELECTRICITY CABLES.

- 1) Do have cable drawings with you on site and check them before you start the excavation.
- 2) Do have a cable locator tool on site and use it to help you.
- 3) Mark out the location of electricity cables.
- 4) Do not use a mechanical excavator within 0.5m of electricity cables.
- 5) Use spades and shovels in preference to other tools.
- 6) Never disturb electricity cables and joints or their protective covers.

IF IN DOUBT – ASK! PHONE 0800 056 5866  
EMERGENCY – If you damage a cable or line Phone  
0800 780 0780 (24hrs) URGENTLY

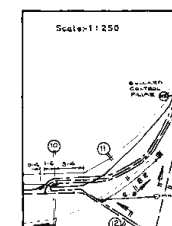
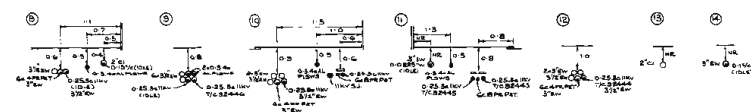
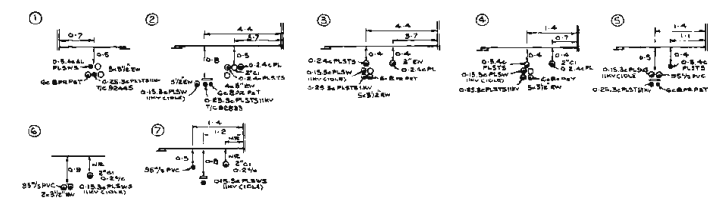
These basic safety precautions are explained in detail in the HSE booklet, HS(G)47 – Avoiding Danger from Underground Services, a copy of which may be obtained from your supervisor or HMSO.

Please be aware that electric lines belonging to other owners of licensed electricity distribution systems may be present and it is your responsibility to identify their location.





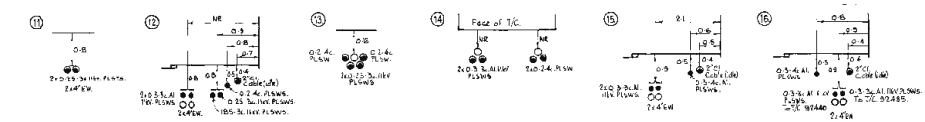




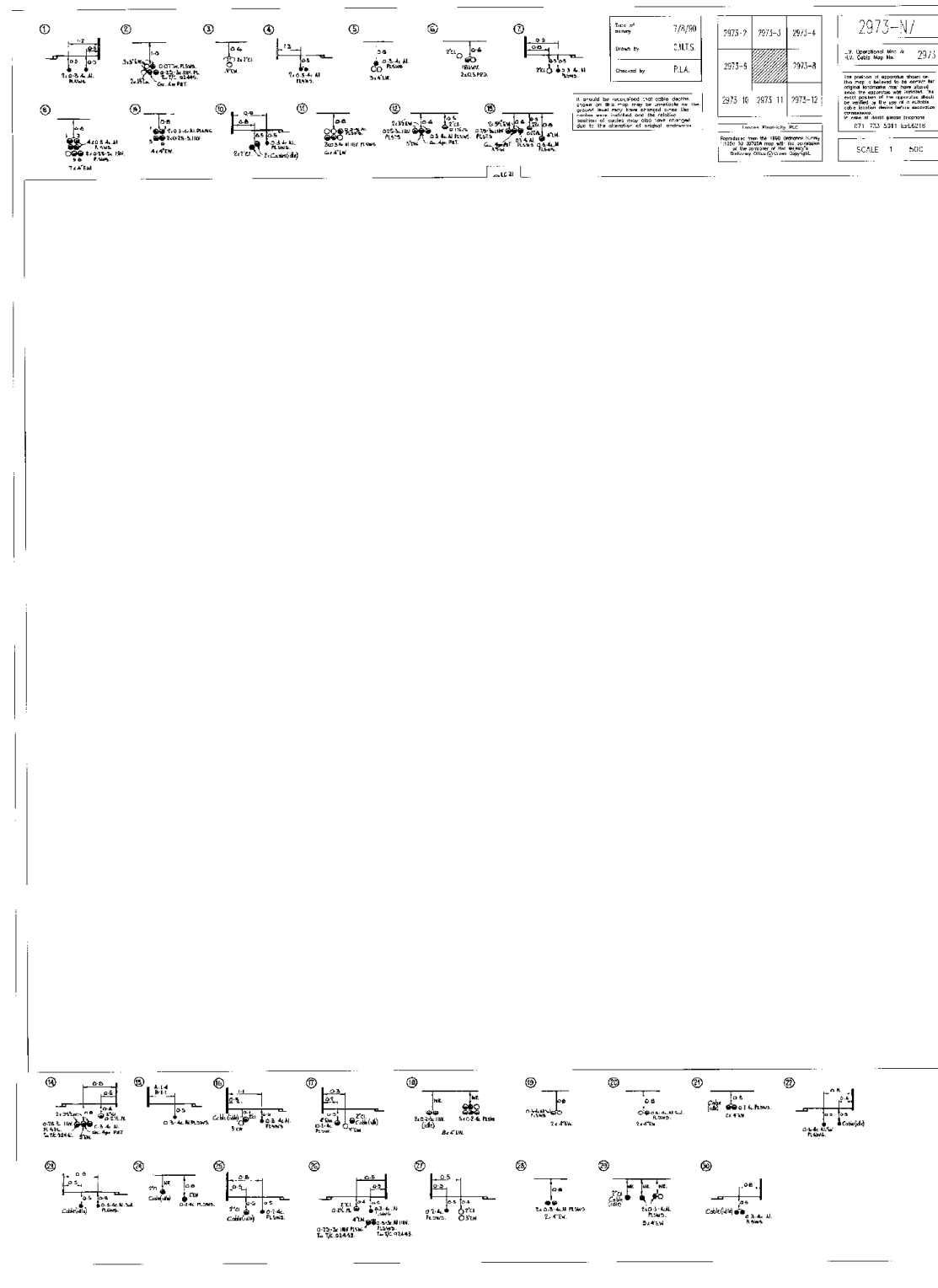






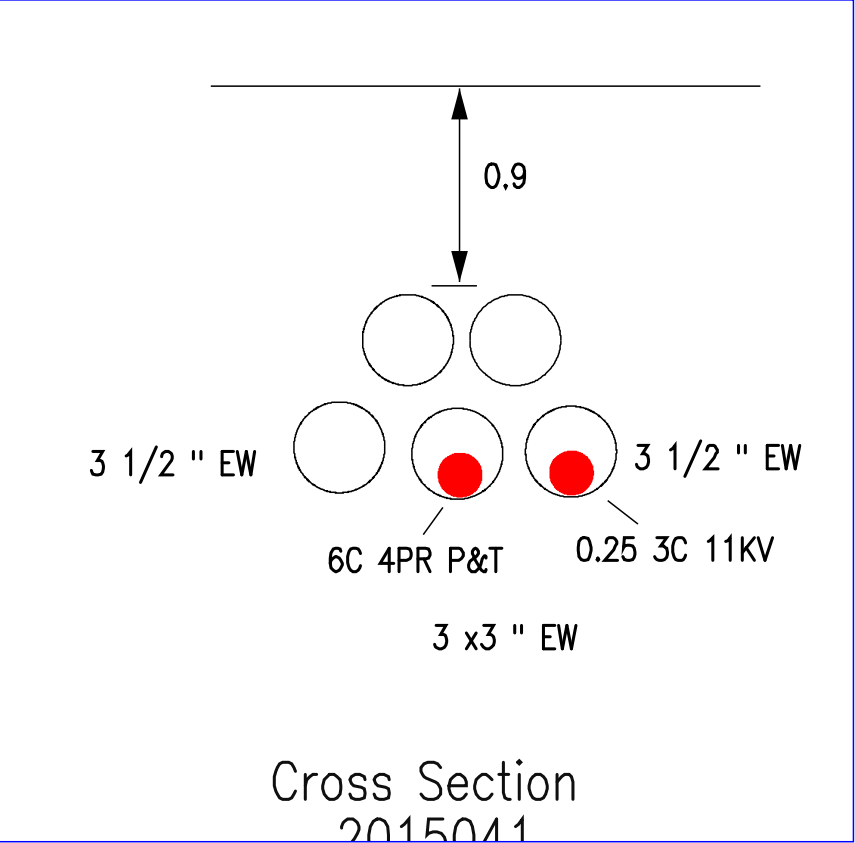




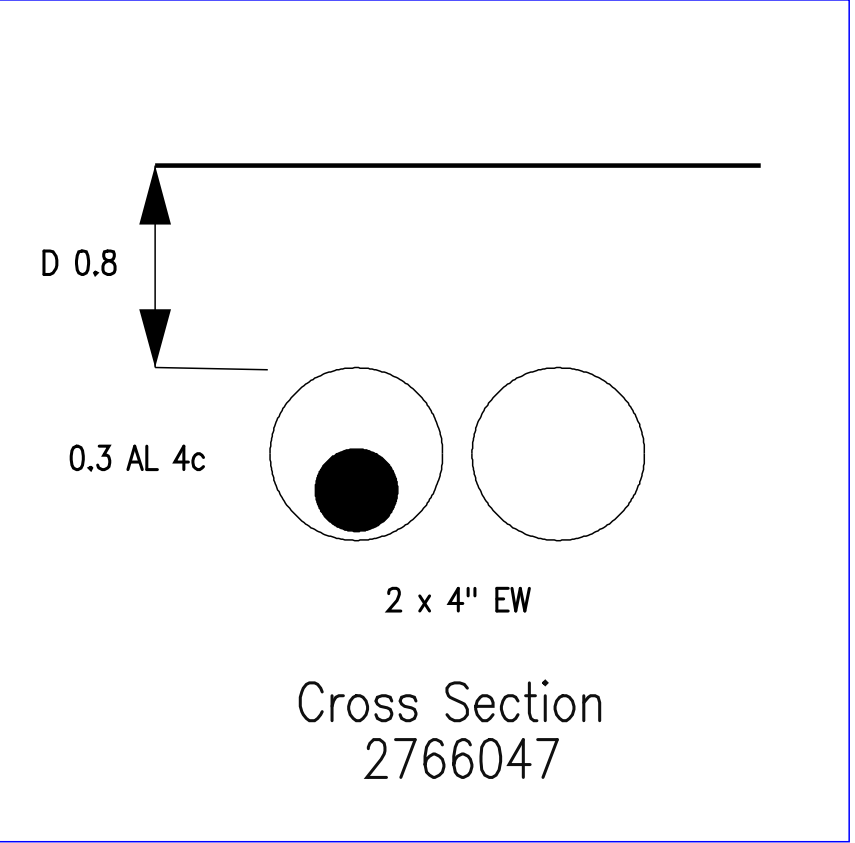




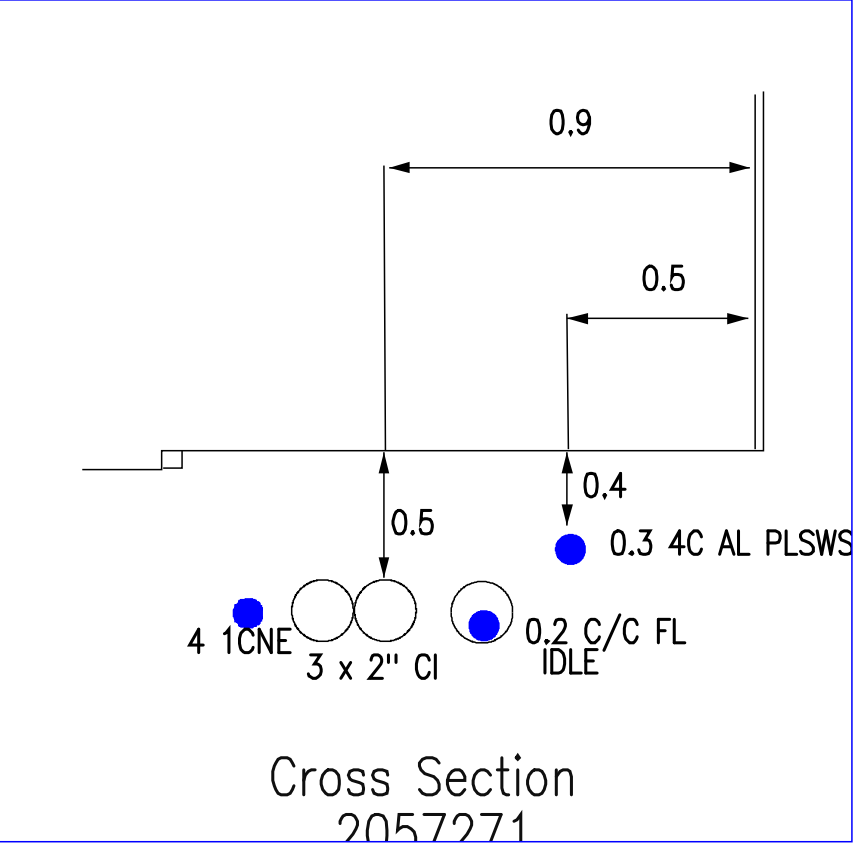
Cross Section (2015041)



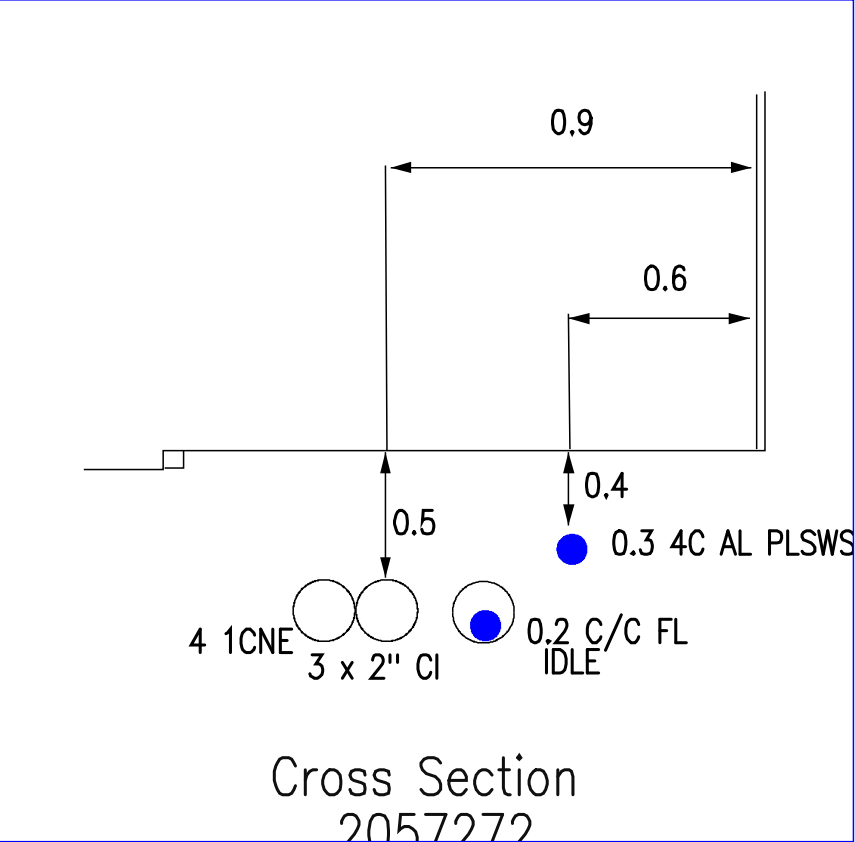
Cross Section (2766047)



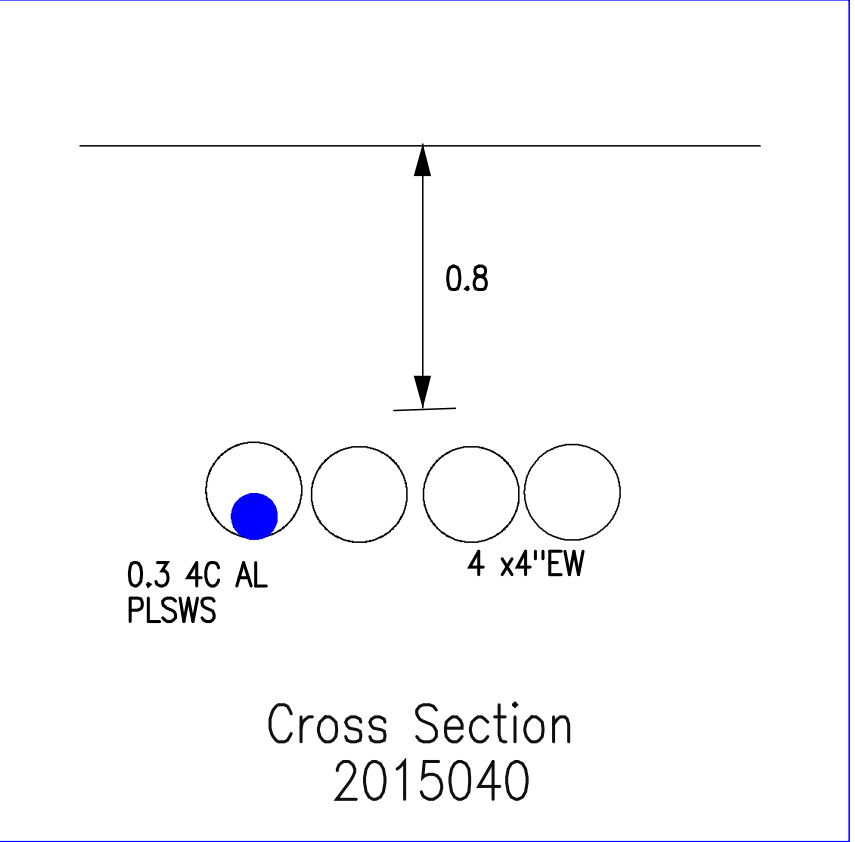
Cross Section (2057271)



Cross Section (2057272)



Cross Section (2015040)



Cross Section (2031832)

